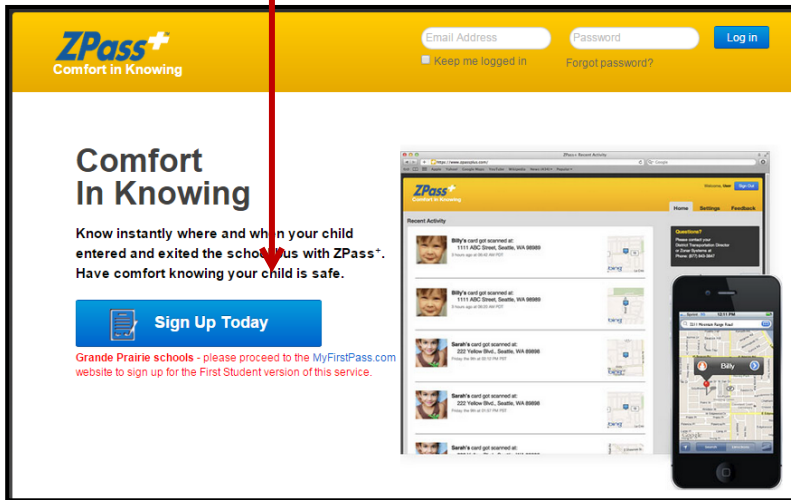


[SCHOOL/DISTRICT NAME]

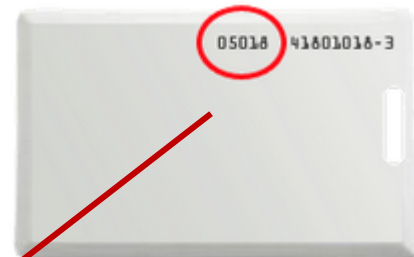
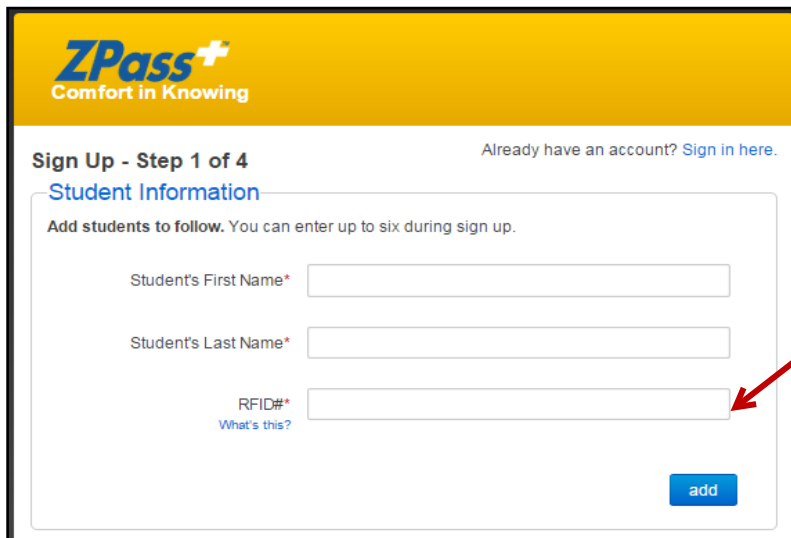
Parent ZPass+ Online Account Set-up Instructions

Instructions to create an online ZPass+ Online Account::

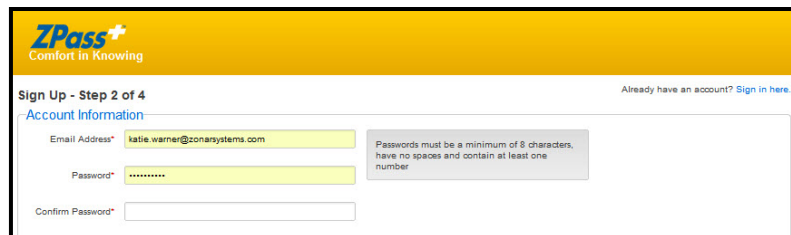
1. Go to www.zpassplus.com.
2. Click on "Sign Up Today".



3. Add students to your account by entering their first and last name, and the RFID# off their card.



4. Enter your email address and create a password.



5. Continue following the on-screen instructions to complete the account set-up process.